

HEAT & GLO™

No one builds a better fire

Designer Line
Gas Fireplaces



It's quite a claim to make, we know—that no one builds a better fire. **So consider the facts.**

We invented the direct vent gas fireplace, basically revolutionizing an entire industry. We're the most award-winning brand in the business and we hold more patents than any competitor.

But we're more than just brainy. We're also beautiful. Known for one-of-a-kind details, unique shapes and imaginative sizes. All stylishly integrated into whole hearth systems that deliver the very latest home fashion trends.

Innovation & design. They fuel everything we do. Like our Designer Line of gas fireplaces, each one is a perfect example of brains and beauty at work. It's a collection sure to ignite a few ideas of your own.



FireBrick® Generates 25% more heat than metal. A one-piece, seamless firebox that looks just like masonry.

IntelliFire™ Reduces gas consumption by providing a pilot flame only when needed. Also supplies a back-up battery system during a power outage.

MystiFire® burner. Concealed, multi-level, textured burner molded directly into the hearth refractory. Improves flame height, and best replicates a woodburning ash bed.

Clean face design. Lets materials like brick, stone and tile come flush to the firebox edge for a seamless finish and maximum view of the fire.

Innovation & Design

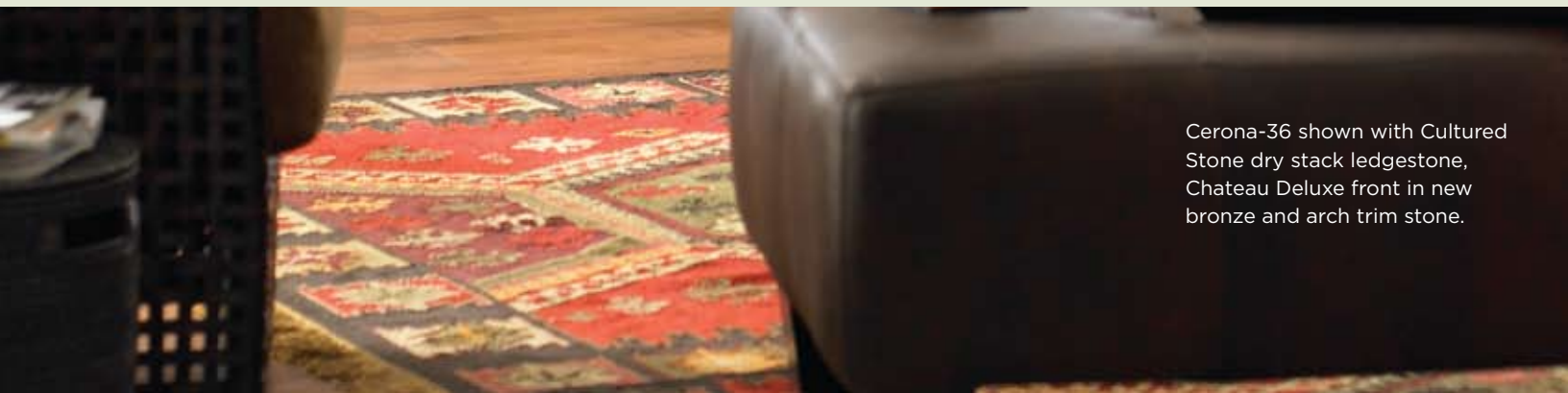
It's why no one builds a better fire

HEAT & GLO™





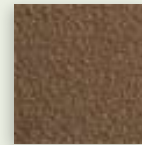
Cerona[®] Good looking & hard working



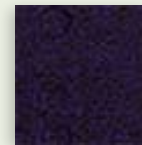
Cerona-36 shown with Cultured Stone dry stack ledgerstone, Chateau Deluxe front in new bronze and arch trim stone.



Cerona shown with natural knotty alder Sonoma mantel, marron brown marble and Valencia front in new bronze



Aged Brass



Black



Graphite



New Bronze

Arched elegance, robust heat and high efficiency—it's a powerful combination. We took serious heat output and stylishly wrapped it in a classic, authentic arched firebox—formed from our patented FireBrick material. And it's extremely efficient. Available in 36" and 42" models.



Cerona-42 shown with Apollo cast stone surround and Galleria doors in aged brass.



Chateau Front



Chateau Deluxe Front



Valencia Front



Galleria Doors

Decorative Fronts and Doors

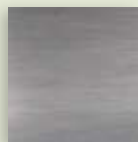
available in aged brass, black, graphite and new bronze.

Cyclone Custom shown
with custom bar application



Is it a fireplace or is it art? Both. This award-winner captures the magic and power of fire, with a twist: a single flame spirals upward, dancing inside a sleek glass cylinder. Available two ways: as a preassembled system for easy installation, or a customizable model to build into your own design or fixture.

Cyclone[®] The art & science of fire



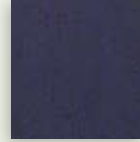
Brushed Nickel

Cyclone System shown with brushed copper decorative front (also available in brushed nickel) and custom Bisazza tile.





Escape-42 shown with bronze Firescreen front and Prairie Ridge companions, Sierra log shelf and Cultured Stone's Blended Textures.



Black



Pewter



Bronze



Carriage Hill companions

Firescreen front is available unadorned, or with Prairie Ridge companions or Carriage Hill companions. Choose black, bronze or pewter.

We started with the best in mind, then made it even better. First we removed all visible sheet metal, then added innovation after innovation, like accent lighting, FireBrick technology and clean face design.

Escape™ First class & second to none



Escape-36 shown with Avalon cast mantel

Let the elegance of an arch transform any room. This graceful arched fireplace, accentuated by clean face design, and a variety of fronts can go almost anywhere—perfect for kitchen, bar, bath or owner’s suite.



Black



Pewter



Bronze



Brushed Nickel



Crescent shown with brushed nickel bun warming doors and arch.

Crescent® A tasty addition & a welcome retreat

Decorative Fronts and Doors

Choose bun warming doors in black and brushed nickel, or Estate front or Reserve front in black, bronze and pewter.



Crescent shown with black bun warming doors.



Estate front



Reserve front

There's an opportunity for a fireplace around every corner.

Designed to slip into corners and tight spots, this compact arched fireplace transforms any room where space is an issue, coziness a must.



Essence front
(with Classic interchangeable decorative panel)



Waverly Panels



Mission Panels



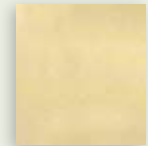
DF-CRES2-BK front



Crescent II shown with auburn-stained maple Bella cabinet with custom wine rack and bronze Reserve front.



Bronze



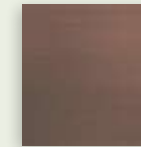
Brass



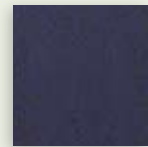
Brushed Nickel



Pewter



Rubbed Copper



Black

Decorative Fronts

Choose Reserve front in bronze, pewter and rubbed copper, Essence front in bronze, brushed nickel, pewter and polished brass or DF-CRES2-BK in black

Crescent® II Limited space & endless possibility



Auburn Maple

Natural Maple

Unfinished Maple

Auburn Oak

Honey Oak

Natural Oak

Auburn Cherry

Natural Cherry

Unfinished Cherry

Bella cabinet finishes

Infinity[®] It goes & goes & goes.



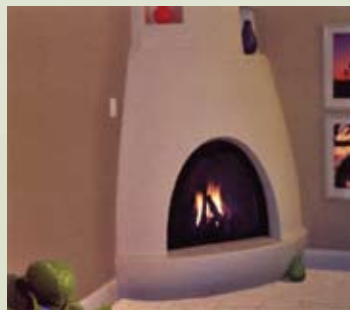
There's one fireplace that goes where others can't. The one gas fireplace that vents greater distances and with more elbows than any other—up to 50 feet horizontal and 40 feet vertical with up to 8 elbows.

Infinity shown with basic front, custom marble surround and mantel.

Bravo[®] Casual & sophisticated

A traditional hearth experience—with some added spark.

Whether you are looking for a Southwestern-style Kiva or a contemporary arched fireplace, the Bravo will add a special accent to your home.



Bravo shown with Rio Bravo front and Taos surround.

Also available:
DF-Aztec front in black.



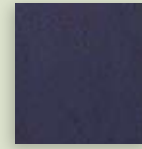
Bravo shown with pewter DF-Bravo front and Luxor surround

Soulstice Intimately sized & luxuriously crafted



Soulstice shown with bronze Firescreen front and Carriage Hill companions, Sutton mantel shelf and custom walnut travertine four-piece surround.

Firescreen front is available unadorned or with Carriage Hill companions (shown in photo). Choose black, bronze or pewter.



Black



Bronze



Pewter

Relax. We've thought of everything. A complete menu of premium features beautifully wrapped in a petite fireplace footprint—the ideal combination for an owner's suite.



Everest[®] Tall, bold & handsome

Everest shown with Atlas Cast Stone surround and standard black front.



Take your fireplace to new heights. Enjoy European-inspired design that's tall and slim, both classic and contemporary.



Twilight Inside comfort & outdoor living.



Twilight interior shown with black Firescreen front and Carriage Hill companions and custom tile.

Twilight exterior shown with standard exterior front and custom tile.



The best of both worlds. The first-ever indoor/outdoor see-through fireplace that adds the warmth and beauty of a clean-burning fireplace to two spaces at once.

Interior Fronts and Doors

Choose Basic front (in black), Essence front (in black, bronze, brushed nickel, pewter and polished brass) or Firescreen Front (in black, bronze and pewter).



Basic Front



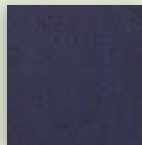
Essence Front



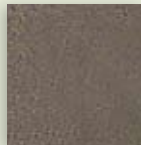
Firescreen Front



Exterior Front
in black only



Black



Bronze



Brushed Nickel

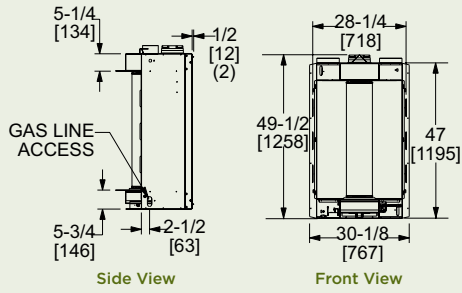


Pewter

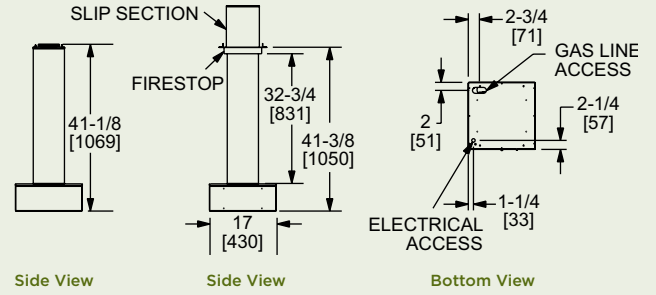


Polished Brass

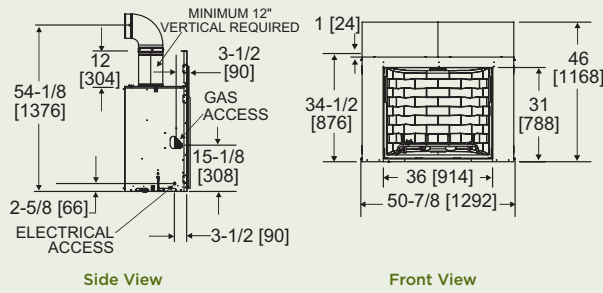
Cyclone System



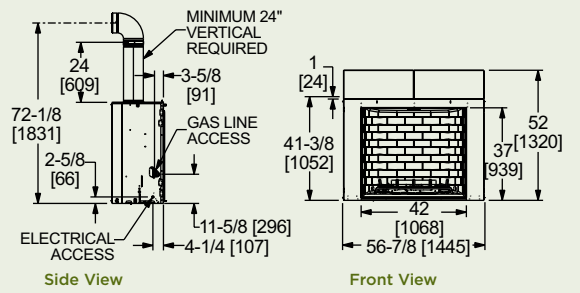
Cyclone Custom



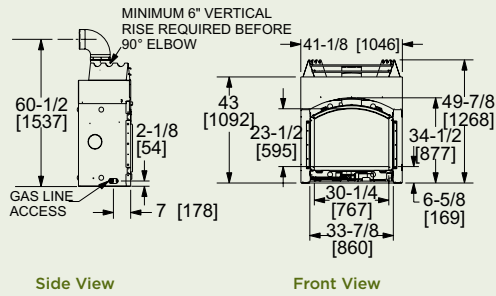
Escape 36



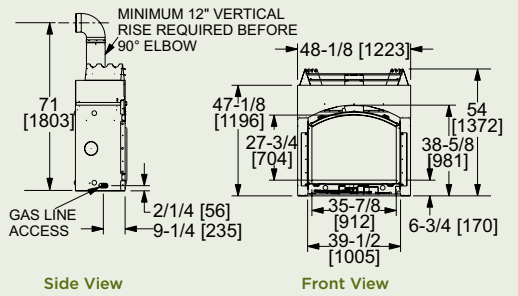
Escape 42



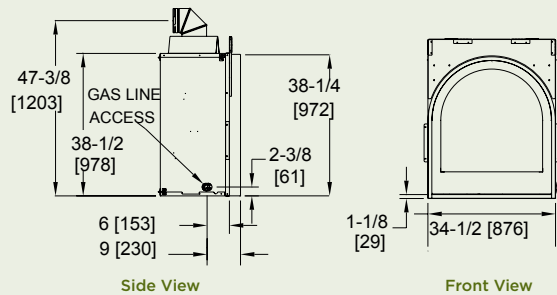
Cerona-36



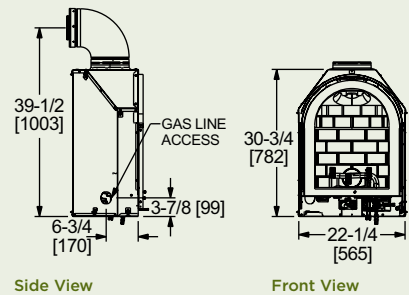
Cerona-42



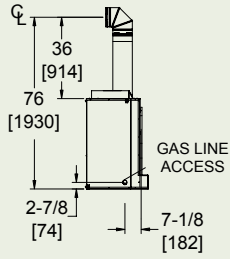
Crescent



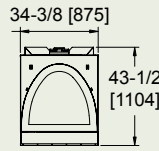
Crescent II



Bravo

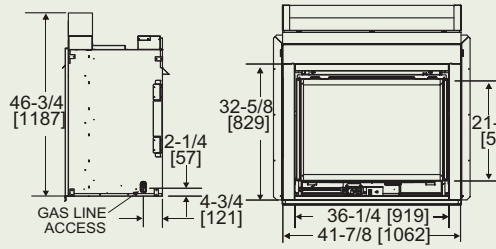


Side View

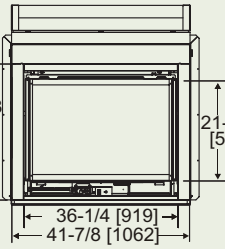


Front View

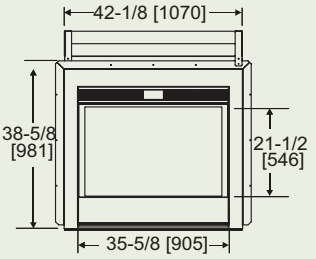
Twilight



Side View

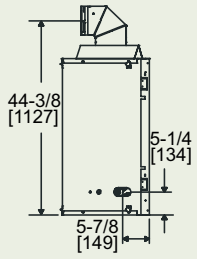


Indoor Front View

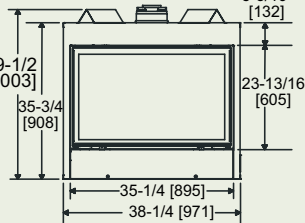


Outdoor Front View

Infinity

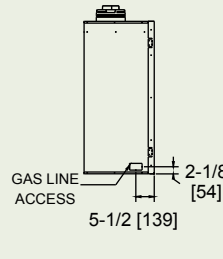


Side View

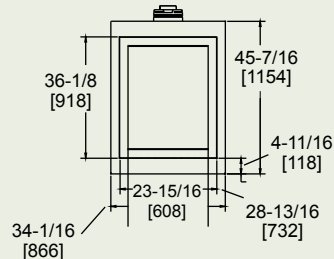


Front View

Everest

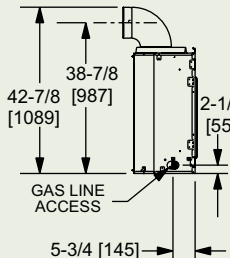


Side View

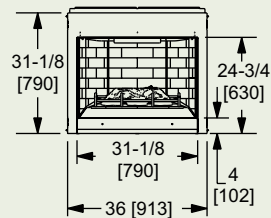


Front View

Soulstice



Side View



Front View

MODEL	HEIGHT		FRONT WIDTH		BACK WIDTH		DEPTH		GLASS SIZE	BTU/HOUR INPUT (NG)
	Actual	Framing	Actual	Framing	Actual	Framing	Actual	Framing		
Cyclone System	49-1/2	50	28-1/4	28-5/8	11-7/8	28-5/8	15-7/8	16-3/8	7-7/8 x 34-1/2 x .20	15,000
Cyclone Custom	41-3/8	41-3/8	17	17-1/2	17	17-1/2	17	17-1/2	7-7/8 x 34-1/2 x .20	15,000
Escape 36	34-1/2	46	50-7/8	51-1/2	50-7/8	51-1/2	21	22	36 x 30	27,000-41,000
Escape 42	41-3/8	52-1/2	56-7/8	57-1/2	48	57-1/2	21	22	42 x 36	35,000-52,000
Cerona-36	49-7/8	50-1/2	41-1/8	42-1/8	28-1/2	42-1/8	21-3/4	22-1/4	30-1/4 x 23-1/2	25,000-37,500 (NG)
Cerona-42	54	54-1/2	48-1/8	49-1/8	35-3/8	49-1/8	21-3/4	22-1/4	35-7/8 x 27-3/4	32,000-48,000 (NG)
Crescent	43-1/8	43-5/8	34-1/2	35-1/2	25-3/8	35-1/2	19-1/4	19-3/4	27-3/4 x 28-1/2	29,500
Crescent II	30-3/4	37	23-1/4	24-1/2	4-1/2	24-1/2	15-1/8	15-5/8	15-1/2 x 21	8,000-11,500
Everest	50	50-1/2	34-1/16	35-1/16	17-7/8	35-1/16	20-7/8	21-3/8	26-7/8 x 33-3/8	23,000-33,000
Bravo	43-1/2	44	34-3/8	35-3/8	12-1/8	35-3/8	24-3/4	24-1/4	30-1/2 x 28	23,000
Infinity	39-1/2	40	38-1/4	39-1/4	22-3/16	39-1/4	19-1/2	20	31-1/2 x 19-1/2	35,000
Soulstice	32-1/2	33	36	37	25-1/2	37	16-1/4	16-1/4	31 x 21-1/4	12,000-17,500
Twilight II	46-3/4 Exterior 38-5/8 Interior	47-1/4 Exterior 41-1/4 Interior	41-7/8	44	41-7/8	44	24	23	36-1/4 x 35-7/8	38,000

Dimensions in diagrams are in inches and millimeters. Dimensions in table are in inches. Product information is not complete and is subject to change without notice. Product installation must adhere strictly to instructions shipped with product. We recommend measuring individual units at installation. Assumes the use of 1/2" sheetrock. NOTE: Combustible material should not cover the face. Make sure you do NOT cover the decorative door opening.

Refer to installation manual for detailed specifications on installing this product. Heat & Glo reserves the right to update units periodically. The flame and ember appearance may vary based on the type of fuel burned and the venting configuration used. Actual product appearance, including flame, may differ from product images.

For complete information and valuable assistance on these models contact us at:

HEAT & GLO™

Lakeville, MN
(888) 427-3973 (952) 985-6000
web:heatnglo.com

A brand of Hearth & Home Technologies, Inc.



HNG-1017U-1008